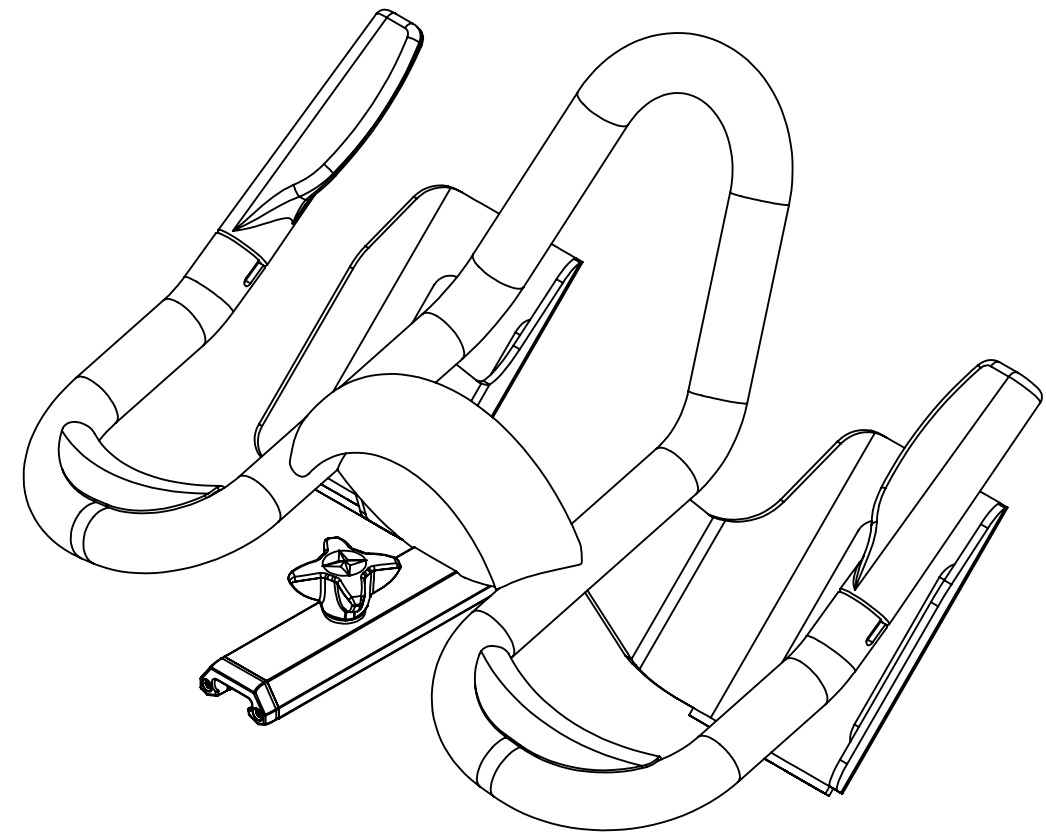
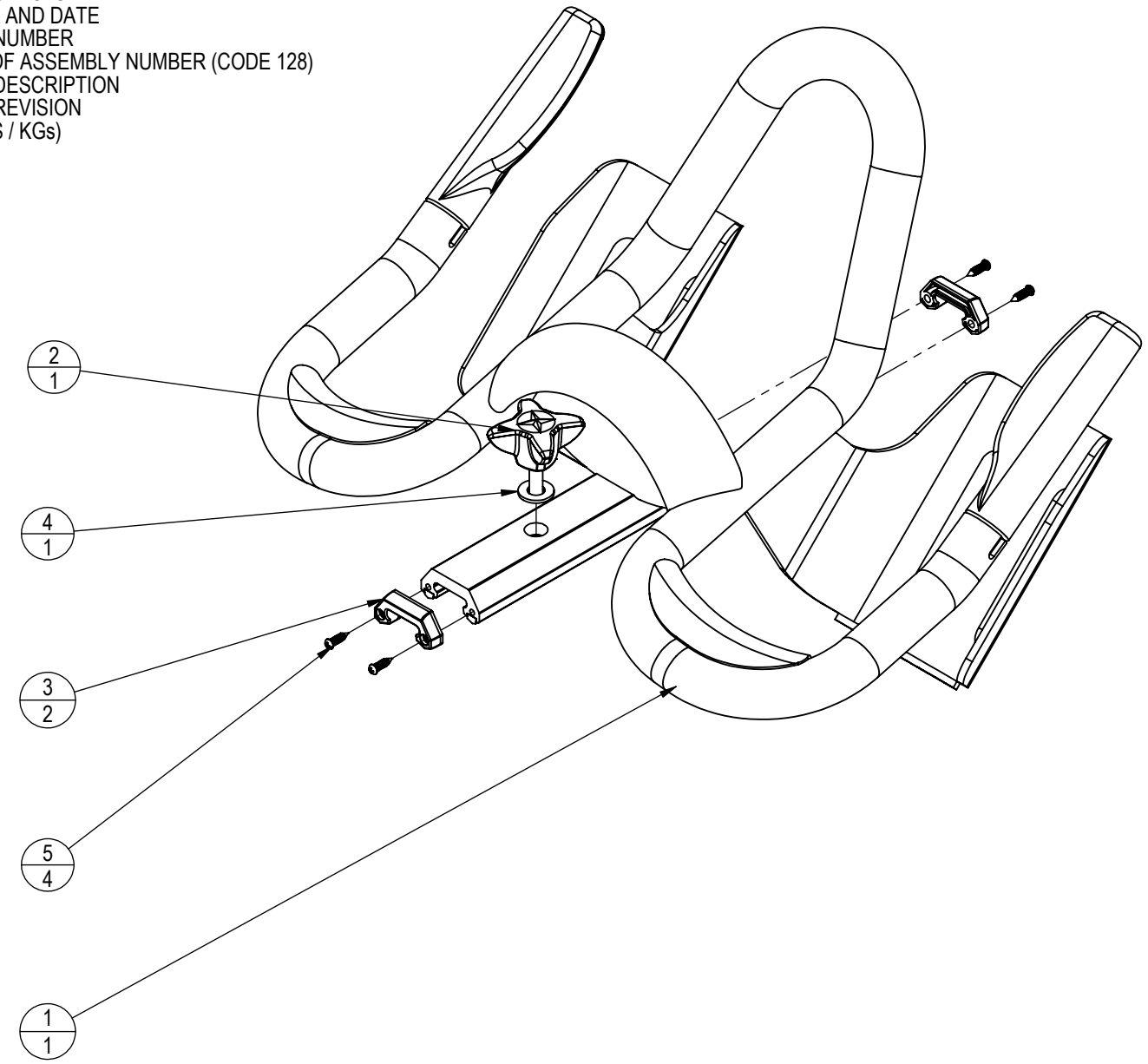


- NOTES:  
 1. ASSEMBLE ITEMS BEFORE PACKAGING.  
 2. PACKAGE ITEMS IN A MANNER THAT THEY WILL NOT BE DAMAGED DURING SHIPPING/STORAGE.  
 3. PACKAGE KIT IN A PLASTIC BAG WITH P/N, DESCRIPTION, REVISION, PO#. ONE KIT PER BAG.  
 4. LABEL PACKAGE TO INCLUDE  
 a. PO NUMBER AND DATE  
 b. ASSEMBLY NUMBER  
 c. BAR CODE OF ASSEMBLY NUMBER (CODE 128)  
 d. ASSEMBLY DESCRIPTION  
 e. ASSEMBLY REVISION  
 f. WEIGHT (LBS / KGs)

REVISION HISTORY				
REV	DATE	DESCRIPTION	ECO	BY
A	10/17/2013	DOCUMENT RELEASE	14399	CRB



ITEM NO.	PART NUMBER	DESCRIPTION	QTY.
1	000-0049	HANDLEBAR W/ INSERTS	1
2	000-0189	ADJUSTMENT SCREW, ASSY, COMOLD	1
3	000-0164	END CAP, FORE AFT SLIDE	2
4	000-0078	WASHER M8 WIDE	1
5	902-5702	SCREW, SELF TAPPING, 6.8 DIAM ROUND HEAD PHILLIPS	4

**DOCUMENT STATUS:**

NOTICE OF PROPRIETARY INFORMATION  
 THIS DOCUMENT SHALL NOT BE REPRODUCED NOR SHALL THE INFORMATION CONTAINED HEREIN BE USED BY OR DISCLOSED TO OTHER EXCEPT AS EXPRESSLY AUTHORIZED BY CORE HEALTH & FITNESS, LLC.

MATERIAL SEE BOM		THIRD ANGLE PROJECTION 		CORE HEALTH & FITNESS, LLC 4400 NE 77th Ave., Suite 300 Vancouver, WA 98662	
FINISH N/A		DRAWN CRB	DATE 10/17/2013	CORE PART NO <b>000-0192</b>	REV <b>A</b>
VENDOR: N/A		P/N: N/A		TITLE HANDLEBAR ASSEMBLY, ACPP	
		U.O.M. MM	SCALE: 1:4	SHEET 1 OF 1	SHEET SIZE: B